

→ **MECTRON PIEZOSURGERY®**
SINUS LIFT TECHNIQUE BY
LATERAL APPROACH –
NEW HIGH EFFICIENCY PROTOCOL

→ MAKING THE TECHNIQUE EVEN SAFER



new

mectron

SLC

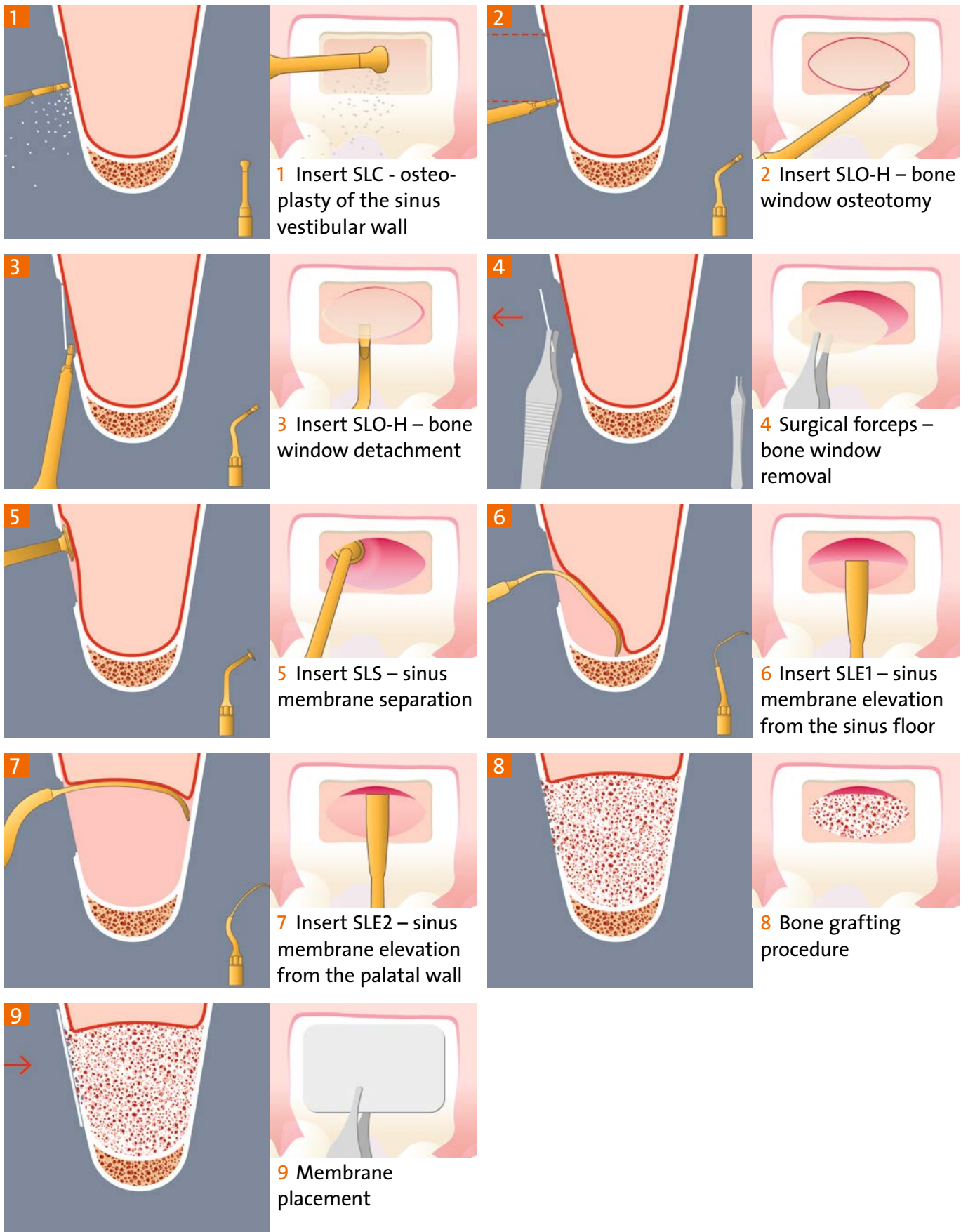
SLO-H

SLS

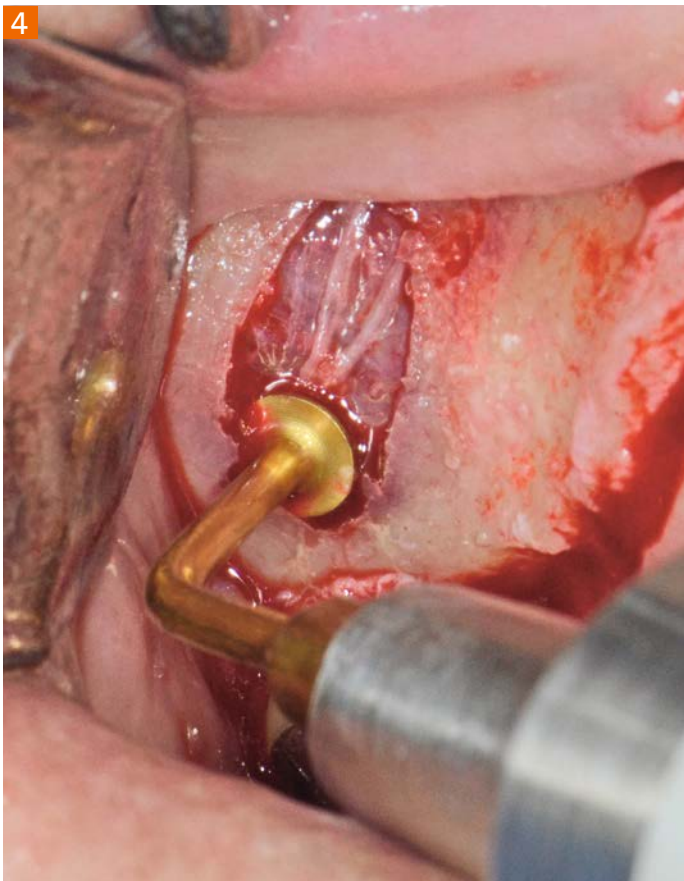
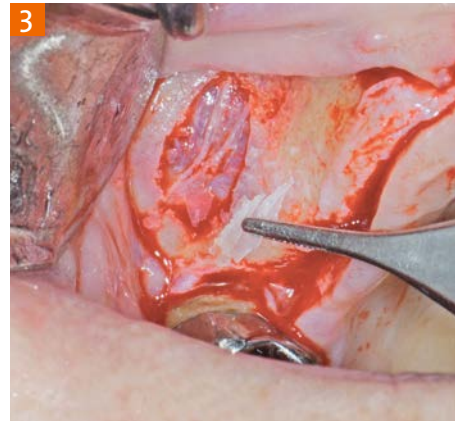
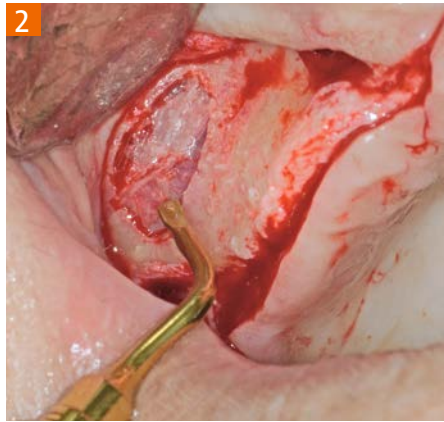
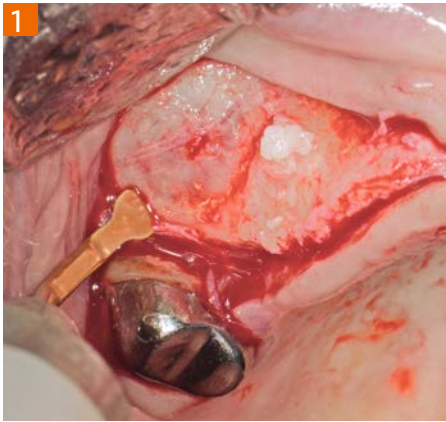
SLE1

SLE2

→ SINUS LIFT BY LATERAL APPROACH WITH PIEZOSURGERY® AFTER 15 YEARS WE RE-DEFINE THE PROTOCOL



REVISITED SINUS LIFT BY LATERAL APPROACH CLINICAL CASE



1 sinus vestibular wall consumption and sinus cavity identification (dark colour)

2 bony window osteotomy

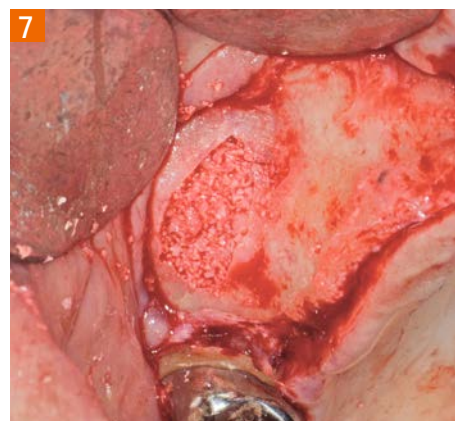
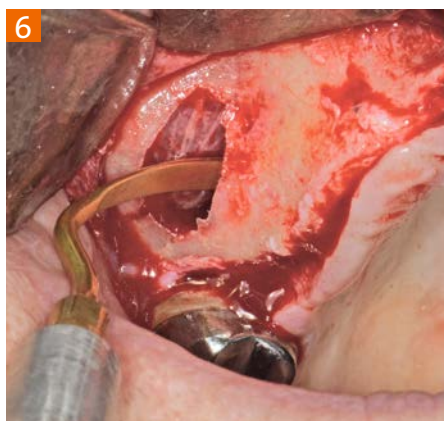
3 bony window removal

4 sinus membrane separation from the bony window margins

5 beginning of the sinus membrane elevation from the sinus floor

6 finalization of the sinus membrane elevation from the palatal wall

7 bone grafting procedure



NEW LATERAL SINUS LIFT KIT FOR MECTRON PIEZOSURGERY® – EROSION TECHNIQUE: THE MAXIMUM, EVIDENCE-BASED* SAFETY



- reduce the risk of membrane perforation
- new SLC insert to perform the osteoplasty of the sinus vestibular wall with maximum safety and unparalleled intra-operative control
- new high-efficiency and safe SLO-H osteotomy insert
- new thin SLS membrane separator, more efficient than the old generation „elephant paw shaped“
- new elevators (SLE1, SLE2) with sharp terminal part to cut Sharpey’s fibers from the endosteum with the maximum safety. The endosteum will be protected thanks to the convexity of the tips
- new insert SLE1 to start the sinus membrane elevation from the sinus floor
- new insert SLE2 to finalize the sinus membrane elevation from the palatal wall

→ SINUS LIFT LATERAL INSERTS AND KIT

Insert SLC – Sinus Lift Consuming	03380013
Insert SLO-H – Sinus Lift Osteotomy	03370025
Insert SLS – Sinus Lift Separator	03390006
Insert SLE1 – Sinus Lift Elevator 1	03390007
Insert SLE2 – Sinus Lift Elevator 2	03390008
Lateral Sinus Lift Kit (SLC, SLO-H, SLS, SLE1, SLE2)	01520023



→ BIBLIOGRAPHY

Vercellotti T, De Paoli S, Nevins M. The Piezoelectric Bony Window Osteotomy and Sinus Membrane Elevation: Introduction of a New Technique for Simplification of the Sinus Augmentation Procedure. *Int J Periodontics Restorative Dent* 2001; 21(6): 561-567

Vercellotti T. Letter to the Editor *Clinical Oral Implants Research*, Volume 20, Issue 5, Date: May 2009, Pages: 531-532

Vercellotti T, Lang Niklaus P. "Piezosurgery in a DailyPractice" - *Forum Implantologicum* : Volume 8 , Issue 1

Stacchi C, Vercellotti T, Toschetti A, Speroni S, Salgarello S, Di Lenarda R. Intra-operative complications during sinus floor elevation using two different ultrasonic approaches. A two-center, randomized, controlled clinical trial. *Clin Implant Dent Rel Res*. 2013 Aug 22. [Epub ahead of print]

Stacchi C, Andolsek F, Berton F, Navarra CO, Perinetti G, Di Lenarda R. Intra-operative complications during sinus floor elevation with lateral approach: a systematic review. *Clin Oral Implants Res.*, submitted



mectron s.p.a.
via Loreto 15/A, 16042 Carasco (Ge), Italia,
tel +39 0185 35361, fax +39 0185 351374,
www.mectron.com, mectron@mectron.com